



LANDSCAPING PLANTS, SHRUBS & TREES

## TABLE OF CONTENTS

1	LAWNS
2	WALKWAYS
3	PATIOS
4	POOLDECKS
5	STAIRS
6	RETAINING WALLS
7	PRIVACY SCREENS & DRIVEWAYS
8	NATURAL STONE
9	ANNUALS
10-12	PERENNIALS
13	SHADE TREES
14	DECIDUOUS SHRUBS & VINES
15	ORNAMENTAL TREES & GROUND COVERS
16	GRASSES & EVERGREEN SHRUBS
17	EVERGREEN TREES & FRUIT TREES
18	BULBS



## KEY WORDS

ANNUALS	AN ANNUAL IS A PLANT WHICH GROWS, BLOOMS, AND PERHAPS, SETS SEEDS WITHIN A ONE YEAR PERIOD. ANNUALS ARE AMONG THE MOST COLORFUL OF ALL FLOWERING BEDDING PLANTS. SINCE ALL OF THE PLANT'S ENERGY IS DIRECTED TOWARD PRODUCING FLOWERS AND SEEDS, ANNUALS TEND TO BLOOM OVER AN EXCEPTIONALLY LONG TIME DURING THEIR GROWING SEASON.
DEADHEADING	DEADHEADING IS THE REMOVAL OF DEAD FLOWER HEADS FROM A PLANT TO STIMULATE FURTHER BLOOMING.
DECIDUOUS	A PLANT THAT IS DECIDUOUS WILL SHED ALL OF ITS FOLIAGE AT THE END OF THE GROWING SEASON. DECIDUOUS PLANTS WILL THEN PRODUCE A NEW SET OF LEAVES AT THE ONSET OF THE NEXT GROWING SEASON.
EVERGREEN	EVERGREEN PLANTS RETAIN THEIR FOLIAGE THROUGHOUT THE YEAR. FOR MANY EVERGREENS, OLDER INTERIOR FOLIAGE WILL BEGIN TO BE SHED WITH THE ONSET OF NEW GROWTH. IT IS IMPORTANT TO WATER EVERGREENS THOROUGHLY DURING WINTER. ESPECIALLY DURING PERIODS OF DRY AND WINDY WEATHER.
FORM	FORM IS THE THREE-DIMENSIONAL SHAPE OF A PLANT OR A PLANT MASS.
FOUNTAIN GROWTH	FOUNTAIN GROWTH DESCRIBES A PATTERN THAT EXTENDS OUTWARD AND DOWNWARD, RESEMBLING AN UMBRELLA OR FOUNTAIN SHAPE.
GLOBOSE GROWTH	GLOBOSE GROWTH IS A ROUNDED FORM RESEMBLING THAT OF A SPHERE OR BALL
GROUND COVERS	GROUND COVERS ARE LOW-GROWING PLANTS USED IN THE LANDSCAPE TO COVER LARGE AREAS OF GROUND. THEY ARE OFTEN USED TO CREATE BLANKETS OF FOLIAGE IN AND AROUND SHRUBS AND TREES TO UNIFY THE LANDSCAPE OR AS A FILLER BETWEEN STEPPING STONES.
HORIZONTAL SPREADING	HORIZONTAL SPREADING DENOTES THE EXPANSION OF A PLANT IN ALL DIRECTIONS ABOVE THE GROUND.
MAT GROWTH	MAT GROWTH SIGNIFIES A DENSE, FLAT EXPANSION ALONG THE GROUND.
MOUNDING PLANTS	MOUNDING PLANTS GROW IN SUCH A WAY AS TO PRODUCE GROWTH BOTH VERTICALLY AND HORIZONTALLY, CREATING A RATHER ROUNDED APPEARANCE. MOUNDING PLANTS CAN SERVE AS A TRANSITION IN THE LANDSCAPE BETWEEN STRONGLY UPRIGHT AND LOW, TRAILING PLANTS.
NATURALIZING	NATURALIZING REFERS TO CULTIVATING PLANTS IN A MANNER THAT MIMICS THEIR GROWTH IN THE WILD, TYPICALLY INTEGRATING THEM INTO THE NATURAL LANDSCAPE, SUCH AS ALONG WOODED AREAS OR SHADED REGIONS.
ORNAMENTAL TREES	ORNAMENTAL TREES ARE SMALLER TREES USED INDEPENDENTLY TO CREATE FOCAL POINTS, TYPICALLY PRIZED FOR THEIR APPEALING STRUCTURE OR FLOWERING DISPLAY.
OVATE	OVATE GROWTH DESCRIBES A FORM THAT IS OVAL-SHAPED.
PERENNIALS	PERENNIALS WILL SURVIVE WINTER AND RETURN WITH NEW GROWTH DURING THE ONSET OF THE GROWING SEASON. PERENNIALS ARE INDISPENSABLE LANDSCAPE ADDITIONS DUE TO THEIR LASTING NATURE. FLOWERING PERENNIALS OFTEN HAVE A SINGLE SEASON OF BLOOMING; PLANTING A VARIETY OF DIFFERENT PERENNIALS WITHIN THE LANDSCAPE WILL ENSURE BEAUTY OVER AN EXCEPTIONALLY LONG TIME.
PYRAMIDAL GROWTH	PYRAMIDAL GROWTH EXHIBITS A PYRAMID OR TRIANGULAR SHAPE.
SELF-SEEDING	SELF-SEEDING PLANTS DISPERSE SEEDS THAT GERMINATE IN THE SURROUNDING AREA, AIDING THEIR SPREAD.
SHADE TREES	SHADE TREES ARE TALL TREES EXCEEDING 100 FEET IN HEIGHT, CREATING EXTENSIVE SHADED REGIONS.
SPREADING GROWTH	SPREADING GROWTH INVOLVES PLANTS EXTENDING AND COVERING THE AREA THEY INHABIT, POTENTIALLY THROUGH SELF-RESEEDING.
UPRIGHT GROWTH	UPRIGHT GROWTH SIGNIFIES A VERTICAL, COLUMNAR POSTURE. UPRIGHT PLANTS PRODUCE VERTICAL BRANCHING WHICH EXCEEDS THE LENGTH OF THEIR HORIZONTAL BRANCHING. UPRIGHT PLANTS ARE WELL-SUITED FOR BACKGROUND AND MID-LEVEL LANDSCAPE PLANTINGS.
VASE GROWTH	VASE GROWTH PATTERN RESEMBLES A V-SHAPED STRUCTURE.



# LAWNS





# WALKWAYS





# PATIOS





# POOLDECKS





# STAIRS





# RETAINING WALLS





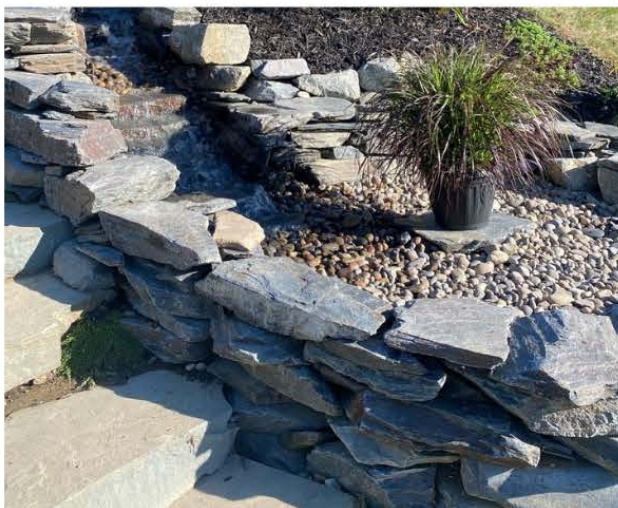
# PRIVACY SCREENS



# & DRIVEWAYS



# NATURAL STONE





ANNUALS	HEIGHT	LIGHT	FORM	
AGERATUM	6-8" HEIGHT	PARTIAL SHADE TO FULL SUN	MOUNDING	LONG BLOOMING PERIOD
DUSTY MILLER	12-24" HEIGHT	FULL SUN	ROUNDED	
GARDEN IMPATIENS	6-24" HEIGHT	FULL SHADE TO PART SUN	ROUNDED	SELF-DEADHEADING
GERANIUM	12-36" HEIGHT	FULL SUN	UPRIGHT	DEADHEADING NEEDED FOR REBLOOMING
HYBRID VERBENA	6-10" HEIGHT	FULL SUN	SPRAWLING	ATTRACTS BUTTERFLIES
MARIGOLD	12-36" HEIGHT	FULL SUN	UPRIGHT	MAY DISCOURAGE SOME PESTS
NEW WONDER SCAEVOLA	6-12" HEIGHT	FULL SUN	HORIZONTAL SPREADING	GREAT FOR ROCK WALLS/OVERHANGS
ORNAMENTAL CABBAGE & KALE	8-12" HEIGHT	PARTIAL SHADE TO FULL SUN	UPRIGHT HEAD	HARDY FALL PLANT
PANSY	6-12" HEIGHT	FULL SUN	SPRAWLING	GOOD FOR SPRING PLANTINGS
PETUNIA	6-15" HEIGHT	PARTIAL SHADE TO FULL SUN	HORIZONTAL SPREADING	DEADHEADING NEEDED FOR REBLOOMING
SALVIA	8-20" HEIGHT	FULL SUN	UPRIGHT	ATTRACTS BIRDS & BUTTERFLIES
VINCA, MADAGASCAR PERIWINKLE	12-24" HEIGHT	PARTIAL SHADE TO FULL SUN	ROUNDED	
WAX BEGONIA	8-12" HEIGHT	FULL SHADE TO PART SUN	ROUNDED	EASY TO CARE FOR



NEW WONDER SCAEVOLA



MARIGOLD



WAX BEGONIA



DUSTY MILLER



PERENNIALS	HEIGHT	LIGHT	FORM	
ASTER	24"-4' HEIGHT	FULL SUN	UPRIGHT	LONG BLOOM TIME
ASTILBE	18-24" HEIGHT	FULL SHADE TO PARTIAL SUN	MOUNDED	GOOD FOR NATURALIZING
AUTUMN JOY SEDUM	18"-24" HEIGHT	LIGHT SHADE TO FULL SUN	ROUNDED / UPRIGHT	
BABY'S BREATH	12"-36" HEIGHT	FULL SUN	ROUNDED	NICE FILLER PLANT IN GARDENS
BALLOON FLOWER	2'-3' HEIGHT	PARTIAL SHADE TO FULL SUN	UPRIGHT / MOUNDED	GOOD FOR BORDERS
BARRENWORT	8"-12" HEIGHT	FULL TO PARTIAL SHADE	MOUNDED	NICE AS A SHADED GROUND COVER
BASKET OF GOLD	9"-12" HEIGHT	FULL SUN	SPRAWLING	NORMALLY REMOVED AFTER BLOOMS DIE OFF
BEEBALM	2'-3' HEIGHT	PARTIAL SHADE TO FULL SUN	UPRIGHT	SPREADS PROFUSELY
BLACK EYED SUSAN	2'-3' HEIGHT	LIGHT SHADE TO FULL SUN	UPRIGHT / ROUNDED	GOOD FOR BORDERS AND CUTTING GARDENS
BUGBANE	4'-6' HEIGHT	PARTIAL SHADE TO FULL SUN	UPRIGHT	NEEDS ADEQUATE MOISTURE FOR GROWTH
BUGLEWEED	6"-9" HEIGHT	FULL SHADE TO FULL SUN	SPIKED FLOWER	MANY COLORS, AGGRESSIVE GROUND COVER
CANDYTUFT	6"-12" HEIGHT	FULL SUN	WOODY SHORT SHRUB	NICE FOR EDGING
CARPATHIAN HAREBELL	6"-12" HEIGHT	PARTIAL SHADE TO FULL SUN	ROUNDED	WORKS WELL AS BORDERS
CATMINT	18"-36" HEIGHT	FULL SUN	UPRIGHT / SPREADING	GOOD AS BOARDERS
CHINESE LANTERN	18"-24" HEIGHT	FULL SUN	UPRIGHT	CAN BE INVASIVE
CIRCLE CHIVES	UP TO 12" HEIGHT	FULL SUN TO PARTIAL SHADE	UPRIGHT	CAN EASILY OVERTAKE A GARDEN IF NOT CONTROLLED
COLUMBINE	24-36" HEIGHT	PARTIAL SHADE TO FULL SUN	ROUNDED	CAN SPREAD THROUGHOUT GARDEN/NATURALIZING
CORAL BELLS	10-12" HEIGHT	PARTIAL SHADE TO FULL SUN	MOUNDED	
COTTAGE PINKS/DIANTHUS	VARIES	FULL SUN	MAT	MANY FOLIAGE AND FLOWER COLORS, GOOD AS BORDERS
CUSHION SPURGE	12"-18" HEIGHT	FULL SUN	MOUNDED	FLOWERS ARE NOT WHOLLY ATTRACTIVE, NICE FOR GREENERY
DAYLILY	36" - 4' HEIGHT	PARTIAL SHADE TO FULL SUN	UPRIGHT	MANY COLORS/NATURALIZING
EVENING PRIMROSE	6"-24" HEIGHT	FULL SUN	UPRIGHT / SPREADING	BEST PLANTED IN MASSES
FALSE INDIGO	3'-4' HEIGHT	PARTIAL SHADE TO FULL SUN	VASE	LOW MAINTENANCE PLANT
FORGET-ME-NOT	6"-8" HEIGHT	LIGHT SHADE	TUFTED / MOUNDING	GOOD FOR NATURALIZING, SPREADS EASILY
FOXGLOVE	2'-5' HEIGHT	PARTIAL SHADE	MOUNDED WITH STALK FLOWERS	SPREADS WITHIN GARDENS
FRINGED BLEEDING HEART	12"-18" HEIGHT	PARTIAL SHADE	MOUNDED	BLOOM LONGER IN MOIST SHADY AREAS



ASTILBE



BASKET OF GOLD



CORAL BELLS



BUGBANE



PERENNIALS	HEIGHT	LIGHT	FORM	
GARDEN PHLOX	15"-36" HEIGHT	PARTIAL SHADE TO FULL SUN	CLUMPING / UPRIGHT	GOOD AS BORDERS
GLOBEFLOWER	18"-24" HEIGHT	LIGHT SHADE TO FULL SUN	UPRIGHT	GOOD AS BORDERS
HEARTLEAF BERGENIA	12"-18" HEIGHT	PARTIAL SHADE TO FULL SUN	ROUNDED	MANY COLORS, BEST USED AS A FOLIAGE PLANT
HENS AND CHICKS	3"-4" HEIGHT	LIGHT SHADE TO FULL SUN	FLAT ROUNDED	GOOD IN ROCK GARDENS
HEUCHERA	18" HEIGHT	PARTIAL SHADE TO FULL SUN	MOUNDED	GOOD NATURALIZING PLANT
HOLLYHOCK	2'-9' HEIGHT	FULL SUN	UPRIGHT	MANY COLORS, NICE AS A BACKGROUND OR BORDER PLANT
HOSTAS	VARIES	FULL SHADE TO PARTIAL SUN	ROUNDED	MANY COLORS AND FLOWERS
HYBRID ANEMONE	2'-4' HEIGHT	PARTIAL SHADE TO FULL SUN	MOUNDED	MANY COLORS, NEEDS MOIST SOIL
IRIS	12"-4' HEIGHT	PARTIAL SHADE TO FULL SUN	UPRIGHT	GOOD FOR WET AREAS
JACOBS LADDER	18"-24" HEIGHT	PARTIAL SHADE TO FULL SUN	UPRIGHT	GOOD AS BORDERS
JAPANESE IRIS	18"-24" HEIGHT	FULL SUN TO PARTIAL SHADE	UPRIGHT	GOOD IN WET AREAS
LADY'S MANTLE	6"-9" HEIGHT	FULL SUN TO PARTIAL SHADE	MOUNDED	DEER RESISTANT
LAMBS'S EAR	12"-15" HEIGHT	FULL SUN	LOW SPREADING	GOOD AS BORDERS
LARKSPUR	4'-6' HEIGHT	FULL SUN	UPRIGHT	MANY COLORS, SHOULD BE STAKED EARLY
LENTEN ROSE	15"-18" HEIGHT	FULL TO PARTIAL SHADE	MOUNDED	WILL SPREAD THROUGHOUT A GARDEN
LEOPARDS-BANE	18"-24" HEIGHT	PARTIAL SHADE TO FULL SUN	MOUNDED	GOOD AS CUT FLOWERS
LUPINE	3'-4' HEIGHT	PARTIAL SHADE TO FULL SUN	UPRIGHT	SHORT BLOOMING TIME, SELF-SEEDS
MONEY PLANT	2'-3' HEIGHT	PARTIAL SHADE TO FULL SUN	UPRIGHT	CAN LOOK LIKE A WEED, GOOD IN CUTTING GARDENS
MOUNTAIN BLUET	12"-24" HEIGHT	PARTIAL SHADE TO FULL SUN	MOUNDED / UPRIGHT	NICE AS A BORDER
PEACH-LEAVED BELLFLOWER	2'-3' HEIGHT	PARTIAL SHADE TO FULL SUN	UPRIGHT	GOOD FOR NATURALIZING, NICE AS A BACK BORDER
PEONY	18" TO 4' HEIGHT	PARTIAL SHADE TO FULL SUN	UPRIGHT/ SHRUB-LIKE	NATURALIZING
PRIMROSE	6"-12" HEIGHT	PARTIAL SHADE	UPRIGHT	GOOD FOR NATURALIZING
PURPLE CONE FLOWER	24"-4' HEIGHT	FULL SUN	UPRIGHT	ATTRACTS BIRDS AND BUTTERFLIES/NATURALIZING
ROCKCRESS	12" HEIGHT	FULL SUN	DENSE / SPREADING	GOOD FOR DRAPING OVER STONE WALLS
ROSE CAMPION	2'-3' HEIGHT	FULL SUN	UPRIGHT	GOOD FOR BORDERS, SELF-SEED
RUSSIAN SAGE	3'-4' HEIGHT	FULL SUN	VASE SHAPE	SHOULD TRIM BACK FOLIAGE IN SPRING



LENTEN ROSE



HEN & CHICKS



RUSSIAN SAGE



PURPLE CONE FLOWER



PERENNIALS	HEIGHT	LIGHT	FORM	
SEA PINKS	3"-12" HEIGHT WITH FLOWERS	FULL SUN	DENSE MAT	SALT TOLERANT PLANT
SHASTA DAISY	1'-3' HEIGHT	PARTIAL SHADE TO FULL SUN	ROUNDED / UPRIGHT	GOOD FOR NATURALIZING/CUTTING GARDENS
SIBERIAN IRIS	2'-4' HEIGHT	PARTIAL SHADE TO FULL SUN	UPRIGHT	NICE AS BOARDERS
SIBERIAN MEADOWSWEET	2'-3' HEIGHT	FULL TO PARTIAL SHADE	MOUNDED WITH LARGE STALK FLOWERS	GOOD AS A REAR BORDER
SILVER MOUND ARTEMESIA	12"-18" HEIGHT	FULL SUN	MOUNDED	GENERALLY FLOWERS ARE SHEARED BEFORE BLOOMING
SNEEZEWEED	2 ½'-6' HEIGHT	FULL SUN	UPRIGHT	MANY COLORS, GOOD CUTTING FLOWER
SNOW-IN-SUMMER	3"-6" HEIGHT	FULL SUN	UPRIGHT / CREEPING	SHOULD BE TRIMMED AFTER INITIAL BLOOMS
SOLOMAN'S SEAL	2'-3' HEIGHT	SHADE PLANT	UPRIGHT / ARCHING	GOOD FOR NATURALIZING
SPIKE GAYFEATHER	1 ½'-3' HEIGHT	PARTIAL SHADE TO FULL SUN	UPRIGHT	GOOD AS BOARDERS
SPIKE SPEEDWELL	10"-3' HEIGHT	LIGHT SHADE TO FULL SUN	UPRIGHT	GOOD IN CUTTING GARDENS
SPOTTED DEADNETTLE	8"-12" HEIGHT	FULL TO PARTIAL SHADE	SPREADING	SOMETIMES USED AS GROUNDCOVER/CAN BE INVASIVE
SUNFLOWER HELIOPSIS	3'-4' HEIGHT	PARTIAL SHADE TO FULL SUN	UPRIGHT	GOOD CUTTING FLOWER
SWEET VIOLA	6"-8" HEIGHT	PARTIAL SHADE	LOW SPREADING	GOOD FOR NATURALIZING/CAN SPREAD AGGRESSIVELY
SWEET WOODRUFF	6"-8" HEIGHT	FULL TO PARTIAL SHADE	LOW SPREADING	EASY TO RAKE OVER IN THE FALL
THE ROCKET LIGULARIA	5'-6' HEIGHT	PARTIAL SHADE TO FULL SUN	MOUNDED	GOOD IN MOIST AREAS
THREADLEAF COREOPSIS	18"-24" HEIGHT	PARTIAL SHADE TO FULL SUN	MOUNDED	ATTRACTS BIRDS AND BUTTERFLIES
TICKSEED	2'-3' HEIGHT	FULL SUN	CLUMP	GOOD FOR NATURALIZING, SHOULD BE DEADHEADED
YARROW	18"-36" HEIGHT	PARTIAL SHADE TO FULL SUN	MOUNDED	CAN BE FLOPPY IF OVERWATERED/NATURALIZING



SEA PINKS



SIBERIAN IRIS



SOLOMONS SEAL



SWEET WOODRUFF



SHADE TREES	HEIGHT	LIGHT	FORM	COLOR
AMERICAN BEECH	50'-75' HEIGHT	FULL SHADE TO FULL SUN	PYRAMIDAL / OVATE	GREEN BLOOMS/COPPER-YELLOW FALL
AMERICAN ELM	75'-90' HEIGHT	PARTIAL SHADE TO FULL SUN	VASE	YELLOW FALL
BASSWOOD	75'-80' HEIGHT	PARTIAL SHADE TO FULL SUN	OVATE / PYRAMIDAL	GREEN-YELLOW BLOOMS/YELLOW FALL
BLACK BIRCH	45'-55' HEIGHT	PARTIAL SHADE TO FULL SUN	OVAL / UPRIGHT	BROWN BLOOMS/YELLOW FALL
BLACK CHERRY	50'-75' HEIGHT	PARTIAL SHADE TO FULL SUN	OVATE	WHITE BLOOMS/ORANGE-YELLOW FALL
BLACK LOCUST	50'-75' HEIGHT	FULL SUN	OVATE	WHITE BLOOMS/YELLOW FALL
BLACK WALNUT	50'-75' HEIGHT	FULL SUN	OVATE	GREEN BLOOMS
BOXELDER	25'-50' HEIGHT	PARTIAL SHADE TO FULL SUN	ROUNDED	YELLOW BLOOMS/ORANGE-YELLOW FALL
FLOWERING DOGWOOD	20'-25' HEIGHT	FULL SHADE TO FULL SUN	ROUNDED	WHITE BLOOMS/RED FALL
GINKGO/MAIDENHAIR TREE	50'-75' HEIGHT	PARTIAL SHADE TO FULL SUN	OVATE / PYRAMIDAL	GREEN BLOOMS/YELLOW FALL
HAWTHORN	15'-25' HEIGHT	FULL SUN	ROUNDED / PYRAMIDAL	WHITE BLOOMS/RED FALL
KENTUCKY COFFEETREE	50'-75' HEIGHT	FULL SUN	OVATE / PYRAMIDAL	WHITE BLOOMS/YELLOW FALL
NORWAY MAPLE	25'-50' HEIGHT	FULL SUN	OVATE / ROUND	YELLOW BLOOMS/ORANGE-YELLOW FALL
PAPER/WHITE BIRCH	50'-75' HEIGHT	PARTIAL SHADE TO FULL SUN	PYRAMIDAL / OVATE	BROWN-GREEN BLOOMS/YELLOW FALL
PIN OAK	50'-75' HEIGHT	FULL SUN	PYRAMIDAL	BROWN BLOOMS/COPPER-RED FALL
RED MAPLE	50'-75' HEIGHT	FULL SHADE TO FULL SUN	MANY	RED BLOOMS/RED-YELLOW FALL
RED OAK	50'-75' HEIGHT	FULL SUN	ROUNDED	BROWN BLOOMS/RED FALL
RIVER BIRCH	25'-40' HEIGHT	PARTIAL SHADE TO FULL SUN	OVATE	BROWN BLOOMS/YELLOW FALL
SHAGBARK HICKORY	25'-40' HEIGHT	PARTIAL SHADE TO FULL SUN	OVATE / OBLONG	BROWN BLOOMS/YELLOW FALL
SILVER MAPLE	60'-70' HEIGHT	PARTIAL SHADE TO FULL SUN	OVATE	RED BLOOMS/YELLOW FALL
SUGAR MAPLE	50'-65' HEIGHT	PARTIAL SHADE TO FULL SUN	OVATE	GREEN BLOOMS/RED-ORANGE FALL
SYCAMORE TREE	70'-90' HEIGHT	FULL SUN	PYRAMIDAL	RED BLOOMS/YELLOW FALL
THORNLESS HONEYLOCUST	25'-50' HEIGHT	PARTIAL SHADE TO FULL SUN	ROUNDED	YELLOW BLOOMS/ORANGE-YELLOW FALL
TREMBLING ASPEN	50'-60' HEIGHT	FULL SUN	OVATE	YELLOW BLOOMS/YELLOW FALL
TULIP TREE/YELLOW POPLAR	65'-90' HEIGHT	FULL SUN	OVATE / GLOBOSE	GREEN-YELLOW BLOOMS/YELLOW FALL
WHITE ASH	50'-75' HEIGHT	PARTIAL SHADE TO FULL SUN	ROUNDED AT MATURITY	GREEN BLOOMS/PURPLE-YELLOW FALL
WHITE OAK	50'-75' HEIGHT	PARTIAL SHADE TO FULL SUN	PYRAMIDAL / ROUNDED	BROWN BLOOMS/RED FALL



BOXELDER



THORNLESS HONEYLOCUST



TULIP TREE



SERVICEBERRY



DECIDUOUS SHRUBS	HEIGHT	LIGHT	FORM	
AMERICAN CRANBERRY BUSH	8'-12' HEIGHT	PARTIAL SHADE TO FULL SUN	ROUNDED / UPRIGHT	WHITE BLOOMS/PURPLE TO RED FALL COLOR
ARROWWOOD	5'-15' HEIGHT	PARTIAL SHADE TO FULL SUN	UPRIGHT / ROUNDED	WHITE BLOOMS/ORANGE-RED FALL COLOR
COMMON NINEBARK	5'-7' HEIGHT	FULL SUN	UPRIGHT	WHITE BLOOMS/BROWN FALL LEAF
COMMON WITCH-HAZEL	15'-20' HEIGHT	PARTIAL SHADE TO FULL SUN	ROUNDED / FOUNTAIN	YELLOW BLOOMS/YELLOW FALL COLOR
ELDERBERRY	10'-15' HEIGHT	FULL SUN	ROUNDED	WHITE BLOOMS/YELLOW FALL COLOR
FORSYTHIA	8'-10' HEIGHT	PARTIAL SHADE TO FULL SUN	FOUNTAIN	YELLOW BLOOMS/YELLOW FALL LEAF
HONEYSUCKLE	6'-10' HEIGHT	PARTIAL SHADE TO FULL SUN	ROUNDED / VASE	WHITE BLOOMS/NO CHANGE IN FALL
LILAC	8'-12' HEIGHT	PARTIAL SHADE TO FULL SUN	ROUNDED / UPRIGHT	PURPLE-WHITE BLOOMS/NO CHANGE IN FALL
NORTHERN BAYBERRY	10'-15' HEIGHT	FULL SUN TO FULL SHADE	ROUNDED / VASE	GREEN BLOOMS/NO CHANGE IN FALL
SHRUBBY CINQUEFOIL	12"-4' HEIGHT	PARTIAL SHADE TO FULL SUN	ROUNDED	WHITE TO RED AND YELLOW BLOOMS
SNOWBERRY	5'-6' HEIGHT	PARTIAL SHADE TO FULL SUN	ROUNDED / SPREADING	PINK TO WHITE BLOOMS/NO CHANGE IN FALL
STAGHORN SUMAC	15'-25' HEIGHT	PARTIAL SHADE TO FULL SUN	UPRIGHT	YELLOW BLOOMS/YELLOW-RED FALL COLOR
SWEETFERN	36"-6' HEIGHT	FULL SHADE TO FULL SUN	UPRIGHT	WHITE-YELLOW BLOOMS/YELLOW-RED FALL COLOR
WINGED EUONYMUS	12'-20' HEIGHT	PARTIAL SHADE TO FULL SUN	ROUNDED / UPRIGHT	YELLOW-GREEN BLOOMS/RED FALL COLOR
WINTERBERRY	6'-10' HEIGHT	PARTIAL SHADE TO FULL SUN	ROUNDED / VASE	WHITE BLOOMS/NO CHANGE IN FALL



COMMON NINEBARK



SHRUBBY CINQUEFOIL



ELDERBERRY



WINGED EUONYMUS

VINES	HEIGHT	LIGHT	COLORS	
CLEMATIS	10'-30' HEIGHT	PARTIAL SHADE TO FULL SUN	MULTIPLE COLORS	CLIMBS WELL ON LATTICE & MAILBOXES
CLIMBING ROSE	10' +/- HEIGHT	FULL SUN	MULTIPLE COLORS	CLIMBS WELL ON LATTICE & BUILDINGS
GOLD FLAME HONEYSUCKLE	10'-13' HEIGHT	PARTIAL SHADE TO FULL SUN	PINKISH RED BLOOMS	GREAT FOR COVERING ARBORS & WALLS
WISTERIA	30' HEIGHT AND WIDTH	PARTIAL TO FULL SUN	PURPLE BLOOMS	GREAT FOR COVERING STRUCTURES



ORNAMENTAL TREES	HEIGHT	LIGHT	FORM	COLOR
AMERICAN HORNBEAM	25'-50' HEIGHT	FULL SHADE TO FULL SUN	OVATE	ORANGE-YELLOW BLOOMS/RED-YELLOW FALL COLOR
EUROPEAN MOUNTAIN ASH	25'-40' HEIGHT	FULL SUN	OVATE / UPRIGHT	WHITE BLOOMS/YELLOW-RED FALL COLOR
FLOWERING CRABAPPLE	6'-25' HEIGHT	FULL SUN	VARIED	WHITE-RED BLOOMS/YELLOW FALL COLOR
MAGNOLIA	10'-12' HEIGHT	PARTIAL SHADE TO FULL SUN	PYRAMIDAL	WHITE-RED-YELLOW FORMS/YELLOW FALL COLOR
PAGODA DOGWOOD	15'-25' HEIGHT	FULL SHADE TO FULL SUN	OVAL TO ROUNDED	WHITE BLOOMS/RED FALL COLOR
SERVICEBERRY	10'-25' HEIGHT	PARTIAL SHADE TO FULL SUN	UPRIGHT	WHITE BLOOMS/RED-YELLOW FALL COLOR

GROUND COVERS	HEIGHT	LIGHT	FORM	
BIGROOT GERANIUM	12"-18" HEIGHT	FULL TO PARTIAL SHADE	SPREADING MOUND	MANY COLORS
BLOODY CRANESBILL	6"-12" HEIGHT	PARTIAL SHADE TO FULL SUN	MOUNDING	MANY COLORS
CREeping PHLOX	6"-12" HEIGHT	PARTIAL SHADE	CREeping MAT	GREAT AS A FLOWERED GROUND COVER
DRAGONS BLOOD SEDUM	2"-6" HEIGHT	FULL SUN	GROUND COVER	GOOD FOR STONE WALLS AND ROCK GARDENS
ENGLISH IVY	6"-12" HEIGHT	FULL SHADE TO FULL SUN	VINE /GROUND COVER	WHITE BLOOMS/NO CHANGE IN FALL
EUROPEAN GINGER	6"-10" HEIGHT	PARTIAL TO FULL SHADE	SPREADING / GROUND COVER	SLOW GROWING BUT MAINTENANCE FREE
JAPANESE SPURGE	6"-10" HEIGHT	FULL SHADE TO PARTIAL SHADE	UPRIGHT / GROUND COVER	WHITE BLOOMS/NO CHANGE IN FALL
MOSS PHLOX	3"-6" HEIGHT	FULL SUN	MOUNDING /SPREADING	GOOD FOR OVER WALLS/GROUNDCOVER
PERIWINKLE/VINCA	6"-12" HEIGHT	FULL SHADE TO PARTIAL SUN	VINE /GROUND COVER	BLUE/LAVENDER/PURPLE BLOOMS/NO CHANGE IN FALL



ENGLISH IVY



EUROPEAN GINGER



JAPANESE SPURGE



PERIWINKLE/VINCA



GRASSES	HEIGHT	LIGHT	FORM	
BLUE BEACH GRASS	2'-3' HEIGHT	FULL SUN	ARCHING CLUMP	GOOD FOR BANK STABILIZATION
BLUE FESCUE	6"-10" HEIGHT	LIGHT SHADE TO FULL SUN	TUFTED CLUMP	NICE FOR BORDERS/CAN SPREAD VIGOROUSLY
DWARF FOUNTAIN GRASS	2' HEIGHT	LIGHT SHADE TO FULL SUN	ARCHING MOUNDED SHAPE	NICE IN MASS PLANTINGS
MAIDEN GRASS	UP TO 7' HEIGHT	FULL SUN	UPRIGHT CLUMP	NICE AS SCREENS/BORDERS
PORCUPINE GRASS	2'-3' HEIGHT	LIGHT SHADE TO FULL SUN	UPRIGHT	GOOD FOR MASSING/SPECIMENS

EVERGREEN SHRUBS	HEIGHT	LIGHT	FORM	
BOXWOOD	VARYING HEIGHTS	PARTIAL SHADE TO FULL SUN	MANY	GREEN BLOOMS/GREEN FALL COLOR
CANADIAN YEW	3'-5' HEIGHT	FULL SHADE TO PARTIAL SHADE	GROUNDCOVER / SPRAWLING	GREEN BLOOMS/NO CHANGE IN FALL
CANDYTUFT	6"-12" HEIGHT	FULL SUN	SHORT SHRUB	SHOULD BE SHEERED AFTER BLOOMING FOR REGROWTH
CATAWBA RHODODENDRON	6'-10' HEIGHT	PARTIAL SHADE TO PARTIAL SUN	ROUNDED / SPRAWLING	LAVENDER TO PURPLE FORM/NO CHANGE IN FALL
COMMON JUNIPER	6"-12" HEIGHT	PARTIAL SHADE TO FULL SUN	UPRIGHT / SPREADING	YELLOW TO BROWN BLOOMS/NO CHANGE IN FALL
INKBERRY	6'-10' HEIGHT	PARTIAL SHADE TO FULL SUN	OVAL / VASE	WHITE BLOOMS/NO CHANGE IN FALL
JAPANESE HOLLY	6'-10' HEIGHT	PARTIAL SHADE TO FULL SUN	ROUNDED	WHITE-GREEN BLOOMS/GREEN FALL COLOR
MOUNTAIN ANDROMEDA	36"-6' HEIGHT	PARTIAL SHADE TO FULL SUN	ROUNDED	WHITE BLOOMS/NO CHANGE IN FALL
MOUNTAIN LAUREL	6'-10' HEIGHT	FULL SHADE TO FULL SUN	OVATE	WHITE-RED BLOOMS/NO CHANGE IN FALL
PJM RHODODENDRON	50"-75' HEIGHT	FULL SUN	PYRAMIDAL	YELLOW TO RED BLOOMS/YELLOW FALL LEAF
ROSEBAY RHODODENDRON	15'-20' HEIGHT	PARTIAL SHADE TO PARTIAL SUN	ROUNDED / SPRAWLING	PINK TO PURPLE TO WHITE BLOOMS/NO CHANGE IN FALL
SHEEP LAUREL	12"-36" HEIGHT	FULL SHADE TO FULL SUN	ROUNDED / HORIZONTAL SPREADING	PINK-PURPLE BLOOMS/NO CHANGE IN FALL
YEW	15"-25" HEIGHT	PARTIAL SHADE TO FULL SUN	ROUNDED	YELLOW TO GREEN BLOOMS/NO CHANGE IN FALL



CANDYTUFT



BOXWOOD



CATAWBA RHODODENDRON



SHEEP LAUREL



EVERGREEN TREES	HEIGHT	LIGHT	FORM	
BALSAM FIR	30'-50' HEIGHT	PARTIAL SHADE TO FULL SUN	PYRAMIDAL	RED BLOOMS/NO CHANGE IN FALL
CANADIAN HEMLOCK	50'-75' HEIGHT	FULL SHADE TO FULL SUN	PYRAMIDAL	GREEN TO YELLOW BLOOMS/NO CHANGE IN FALL
COLORADO BLUE SPRUCE	35'-60' HEIGHT	PARTIAL SHADE TO FULL SUN	COLUMNAR / PYRAMIDAL	GREEN-ORANGE BLOOMS/NO CHANGE IN FALL
DARK AMERICAN ARBORVITAE	20'-30' HEIGHT	PARTIAL SHADE TO FULL SUN	PYRAMIDAL	NO CHANGE IN FALL
EASTERN ARBORVITAE	25'-40' HEIGHT	PARTIAL SHADE TO FULL SUN	PYRAMIDAL	YELLOW BLOOMS/NO CHANGE IN FALL
EASTERN REDCEDAR	25'-50' HEIGHT	PARTIAL SHADE TO FULL SUN	COLUMNAR / PYRAMIDAL	YELLOW TO GREEN BLOOMS/NO CHANGE IN FALL
EASTERN WHITE PINE	50'-75' HEIGHT	PARTIAL SHADE TO FULL SUN	OVAL / PYRAMIDAL	PINK TO YELLOW BLOOMS/NO CHANGE IN FALL
EMERALD GREEN ARBORVITAE	15' HEIGHT	PARTIAL SHADE TO FULL SUN	PYRAMIDAL	NO CHANGE IN FALL
GREEN GIANT ARBORVITAE	40'-60' HEIGHT	PARTIAL SHADE TO FULL SUN	PYRAMIDAL	NO CHANGE IN FALL
NORWAY SPRUCE	60'-80' HEIGHT	FULL SUN	PYRAMIDAL	PINK BLOOMS/NO CHANGE IN FALL
PITCH PINE	40'-60' HEIGHT	FULL SUN	PYRAMIDAL	YELLOW TO GREEN BLOOMS/NO CHANGE IN FALL
RED PINE	40'-60' HEIGHT	FULL SUN	PYRAMIDAL / OVAL	PURPLE TO RED BLOOMS/NO CHANGE IN FALL
SCOT'S PINE	45'-60' HEIGHT	FULL SUN	PYRAMIDAL	YELLOW BLOOMS/NO CHANGE IN FALL
WHITE SPRUCE	35'-50' HEIGHT	PARTIAL SHADE TO FULL SUN	COLUMNAR / PYRAMIDAL	YELLOW TO RED BLOOMS/NO CHANGE IN FALL



FRUIT TREES	HEIGHT	LIGHT
APPLE	10'-20' HEIGHT DEPENDING ON VARIETY	FULL SUN
BLUEBERRY	12"-6' HEIGHT	PARTIAL SHADE TO FULL SUN
CHERRY	10'-20' HEIGHT	FULL SUN
PEACH	10'-15' HEIGHT	FULL SUN
PEAR	15'-20' HEIGHT	FULL SUN



BULBS	HEIGHT	LIGHT	FORM	COLOR
CANNA	24"-4' HEIGHT	FULL SUN	UPRIGHT	VARIOUS COLORS
DAFFODIL	12"-18" HEIGHT	PARTIAL SHADE TO FULL SUN	UPRIGHT	VARIOUS COLORS
DUTCH CROCUS	3"-6" HEIGHT	PARTIAL SHADE TO FULL SUN	UPRIGHT	VARIOUS COLORS
GARDEN DAHLIA	12"-6' HEIGHT	PARTIAL SHADE TO FULL SUN	UPRIGHT	VARIOUS COLORS
GARDEN HYACINTH	6"-12" HEIGHT	FULL SUN	UPRIGHT	VARIOUS COLORS
GARDEN LILY	12"-4' HEIGHT	PARTIAL SHADE TO FULL SUN	UPRIGHT	VARIOUS COLORS
GLADIOUS	24"-4' HEIGHT	FULL SUN	UPRIGHT	VARIOUS COLORS
GLORY OF THE SNOW	3"-6" HEIGHT	PARTIAL SHADE TO FULL SUN	UPRIGHT	WHITE COLOR
GRAPE HYACINTH	6"-12" HEIGHT	FULL SUN	IRREGULAR	BLUE COLOR
IRIS	12"-4' HEIGHT	PARTIAL SHADE TO FULL SUN	UPRIGHT	PURPLE COLOR
LILY OF THE VALLEY	6"-12" HEIGHT	FULL SHADE TO PARTIAL SUN	UPRIGHT	PINK/WHITE COLOR
TUBEROUS BEGONIA	6"-12" HEIGHT	FULL SHADE TO PARTIAL SUN	UPRIGHT	VARIOUS COLORS
TULIP	12"-18" HEIGHT	PARTIAL SHADE TO FULL SUN	UPRIGHT	VARIOUS COLORS



GARDEN DAHLIA



GARDEN LILY



GLORY OF THE SNOW



GRAPE HYACINTH

CUSTOMER RESOURCES	WEBSITE
CAMBRIDGE PAVINGSTONES	<a href="http://www.cambridgepavers.com">HTTP://WWW.CAMBRIDGEPAVERS.COM</a>
SAVATREE	<a href="https://www.savatree.com">HTTPS://WWW.SAVATREE.COM</a>
TECHO-BLOC	<a href="https://www.techo-bloc.com">HTTPS://WWW.TECHO-BLOC.COM</a>
GENEST CONCRETE	<a href="https://www.genest-concrete.com">HTTPS://WWW.GENEST-CONCRETE.COM</a>
IDEAL STONE	<a href="http://www.idealconcreteblock.com">HTTP://WWW.IDEALCONCRETEBLOCK.COM</a>
LANDCARE STONE	<a href="https://landcarestone.com">HTTPS://LANDCARESTONE.COM</a>
MILLCANS NURSERY (CLOSED TO PUBLIC)	<a href="http://www.mnplants.com">HTTP://WWW.MNPLANTS.COM</a>
VAN BERKUM NURSERY (CLOSED TO PUBLIC)	<a href="http://www.vanberkumnursery.com">HTTP://WWW.VANBERKUMNURSERY.COM</a>

“

*We just had a new lawn installed along with some underground pipes to our gutter system to correct a wash out problem and we could not be happier. The young man that did our work was professional, friendly, and took the time to explain everything in detail and answer all our questions.*

*Starting in early spring we look forward to spending time enjoying our outdoor living space with all of the beautiful features that Burgess created for us. I am thrilled to say we now have our own amazing vacation spot right in our back yard.*

*The laborers who came and did the planting and the leaf blowing were exceptionally respectful and polite, I am delighted with the corporation!! Well done team!!!*

*Burgess Landscaping Services transformed our yard from an overgrown, ill-cared for mess into favorite place to be on long summer nights and brisk autumn days. The crew was meticulous from start to finish ensuring our satisfaction with the completed project.*

”



@BURGESSLANDSCAPINGSERVICES



(603) 833-1077



[HTTPS://WWW.FACEBOOK.COM/BURGESSLANDSCAPE](https://www.facebook.com/burgesslandscape)



[HTTP://WWW.BURGESSLS.COM](http://www.burgesssls.com)





